



ATI Port



- **Antofagasta Terminal Internacional S.A.** is the controller of **dock N° 2 of Antofagasta Port** since 2003. Our concession is valid until 2033.
- 47 million tons transferred in the last 17 years.
- We are capable to receive vessels up to 9.600 TEUs (Max LOA 347 meters).
- Labor force: 470 direct and 2000 non-direct employees.
- Certifications on Quality Management System (ISO 9001:2015), Environment Management System (ISO 14001:2015) and Carbon Footprint Measurement.





Antofagasta Terminal Internacional

➤ Shareholders

35%



35%



30%



- ✓ ATI Port is located in the region of Antofagasta, on the north coast of Chile.
- ✓ Privileged location for cargoes from south Bolivia, Argentina, Paraguay and Brazil.
- ✓ Multipurpose port assisting the private mining industry and other cargoes.





Shopping mall

Public Port

Berth N° 7

Berth N° 5

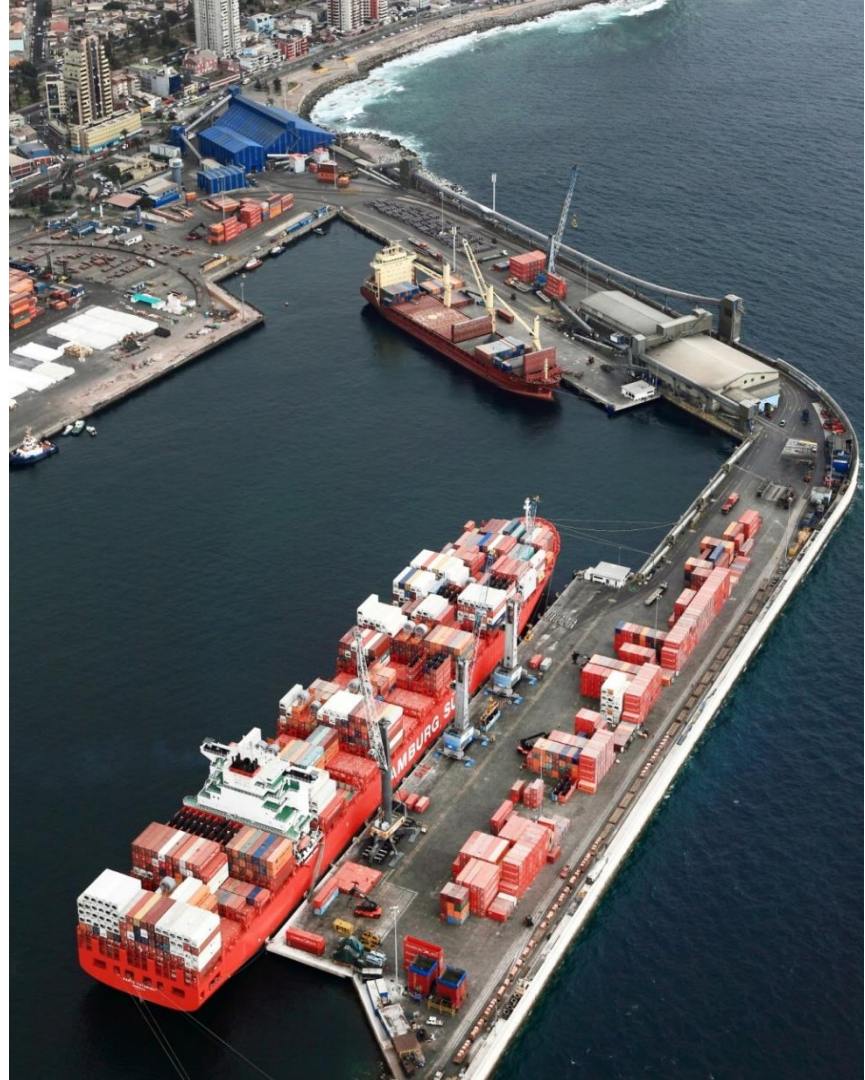
ATI

Facilities and Equipments

- 9,7 Hectares
- 2 Berths (n° 5 y 7)
- 4 Mobile Harbour Crane (MHC)
- 76 Reefer Plugs-in
- Rail access to both berths
- 6 Reachstacker
- >20 Others ports equipment

	Berth n° 5	Berth n° 7
Long	185	260
Length (max)	225	347
Draft (max)	12,0	11,6

ATI is authorized to operate ships of 347 meters of length, with a capacity of 9,600 TEU



Cargoes operated – ATI Port



Containers



Break Bulk



Project Cargo

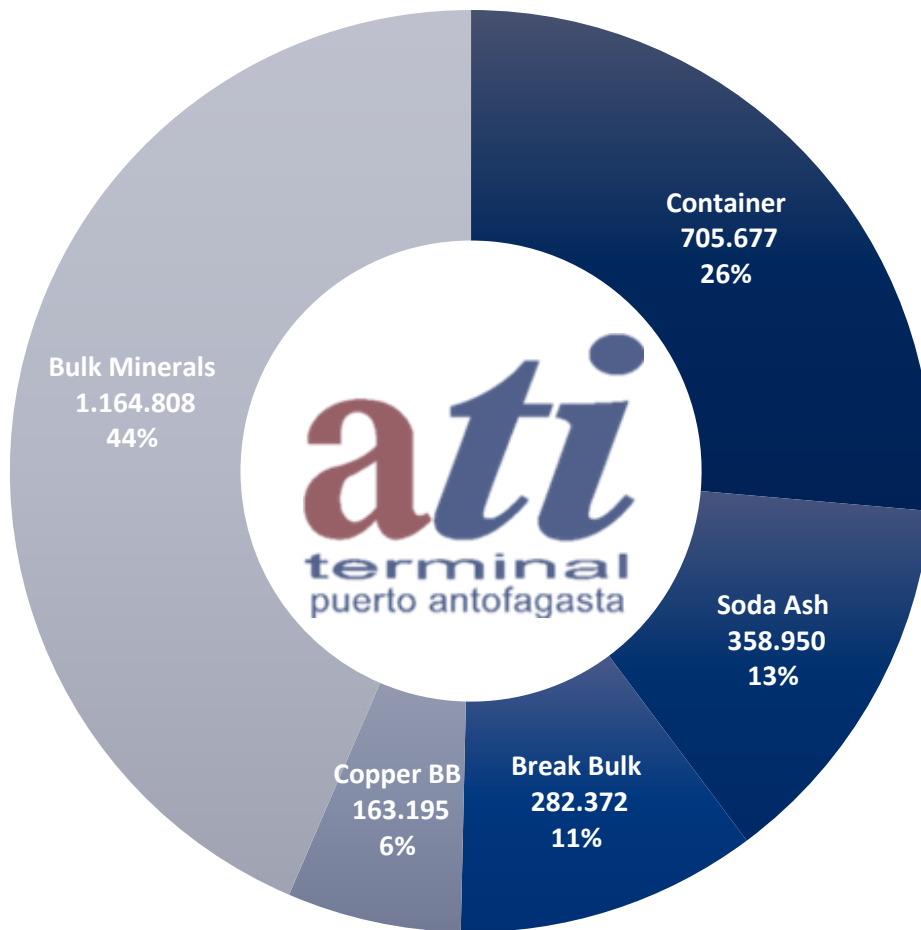


Bulk

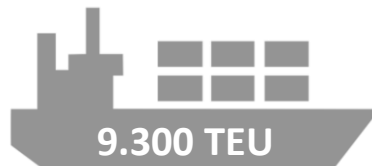
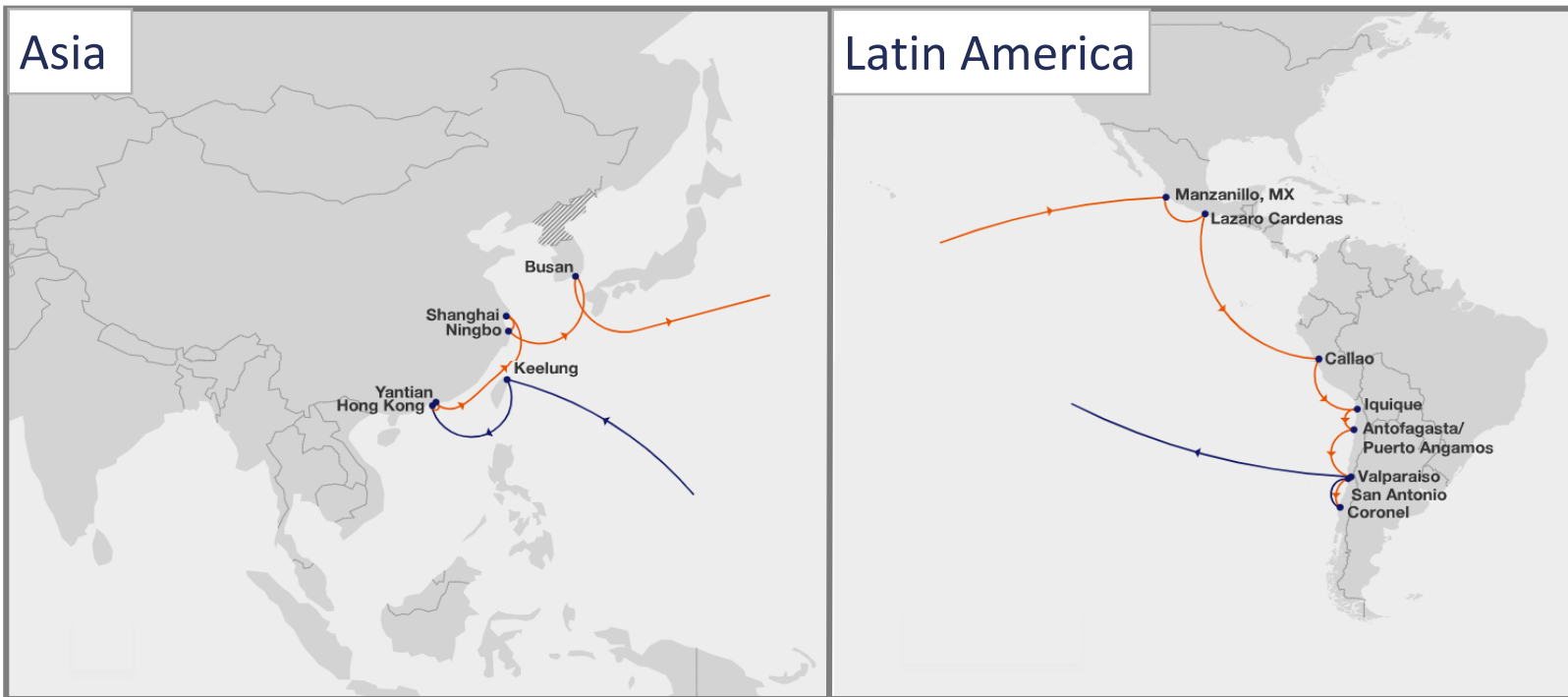


Rotainers

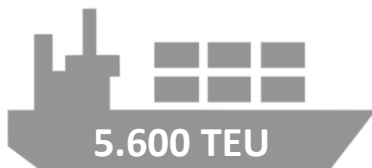
Throughput 2021 – 2.7 MT



AN1 Services



Fortnightly

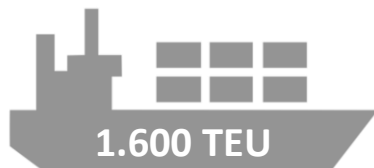


Fortnightly

Latin America



North Feeder Services



Fortnightly

Latin America





The best port option in the north of Chile

